



UltraTemp PermaFlo DC PermaFlo DC Primers



**Cements**

# UltraTemp®

POLYCARBOXYLATE, NON-EUGENOL,  
TEMPORARY LUTING/FILLING MATERIAL



**Preparation stays moist, bacteria is sealed out!**

## HYDROPHILIC!

- The first temporary polycarboxylate
- Mix and deliver in one action
- Great for kindness to pulp and for achieving a quality seal!
- Water soluble until set, making for easy clean-up
- No eugenol
- Available in regular and firm set

A unique paste-to-paste polycarboxylate temporary luting and filling material. It possesses attributes long known to carboxylates, namely low irritation to pulp and great sealing capability. Once set, UltraTemp is permeable to water, so it allows ionic-balanced moisture from saliva to move through it while at the same time sealing out bacteria<sup>2</sup>.

UltraTemp is most commonly used for cementing temporary crowns, inlays and small temporary fillings. Regular set is suggested for routine 2-4 week temporization of custom fabricated provisionals or standard pre-formed provisionals. Firm set is recommended for the retention of interim restorations on implants and provisional restorations when longer retention is required. Firm set is also ideal for sealing the access opening in walking-bleach cases.

**#1174 - UltraTemp Regular Kit**  
**#3037 - UltraTemp Firm Kit**

- 1 - 10g syringe
- 20 - Ultra-Mixer tips



**#3042 - UltraTemp Regular**  
**#3041 - UltraTemp Firm**

- 1 - 10g syringe



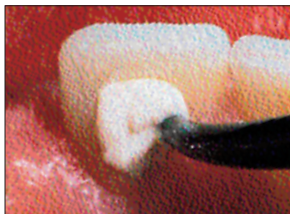
**Shelf Life: 24 months.**



1. Mix and deliver simultaneously. No mess, little waste!



2. Prior to complete set, excess UltraTemp is easily removed with a moist cotton swab, gauze, etc. Following subgingival set of 2-3 minutes, UltraTemp is quickly removed with explorer.



1. Deliver mixed UltraTemp Firm Set directly to Skini syringe, then to site.



2. Before material sets, wipe off excess UltraTemp easily with wet gauze or cotton swab before setting.



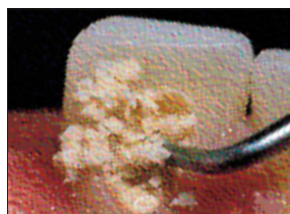
3. Upon provisional removal, shown here two weeks post op, cement clings to both provisional and preparation. This is VALUABLE. This is one indicator of a quality sealing cement.



4. Bulk of residual cement is quickly removed. Note well-healed tissues. Tissue kind!



3. Finished



4. Easily removed



5. Use an abrasive (Consepsis Scrub) with a rubber cup or the ICB brush, as shown here, to remove residual cement.



6. Cleaned preparations can now be "dried" and the prosthesis cemented.

<sup>1</sup> www.realityesthetics.com <sup>2</sup> Study available upon request. (Lit # 19) Patents Pending.

# PermaFlo® DC & PermaFlo DC Primers

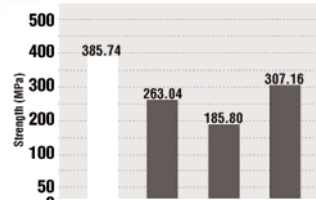
DUAL-CURE COMPOSITE LUTING/RESTORATIVE RESIN AND CHEMICAL CURE BONDING PRIMERS



Special chemical cure primers for non-light cure bonding with PermaFlo DC. Note clinicals below and following page.

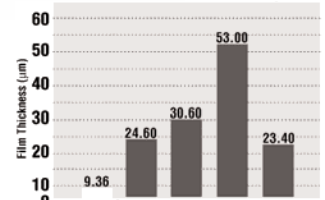
- Thixotropic with low film thickness (9µm)
- Highest filled, dual-cure composite: 70% by weight
- Radiopaque
- Low polymerization shrinkage
- Self mixing, syringe delivery

### COMPRESSIVE STRENGTH



Compressive Strength: When cured by chemical mode only, PermaFlo DC outperforms other quality luting materials.

### FILM THICKNESS



Lowest Film Thickness measured.

PermaFlo DC luting resin is a highly filled, small particle, dual-cured resin. Its unique formulation provides maximum strength and minimal wear. Due to resin design and thixotropic properties, PermaFlo DC has the lowest film thickness known for a luting composite resin: only 9µm! Recommended for opaques, total ceramic crowns, etc.

Though it is highly filled, 70% by weight, PermaFlo DC flows easily through a small orifice tip. Use as an initial layer and/or bulk fill for posterior bonded composites. Use when luting posts and for intimately flowing around protruding direct placed posts for core fabrication. Post luting and core fabrication can occur in one operation!

PermaFlo DC Bonding Primers are used only with PermaFlo DC Composite Luting/Restorative Resin for non-light cure bonding and luting.<sup>1</sup> Primer A is NTG-GMA type resin; Primer B is a proprietary resin.



Etch the canal space using Ultra-Etch and Endo-Eze tip. Start injecting from the bottom of the canal. Etch for 15 seconds. Rinse thoroughly and dry.



Use PermaFlo Primer A for 10 seconds, no air dry, no rinse. Then use PermaFlo Primer B. Do not rinse. Suction excess and dry.



Use 20-gauge Endo-Eze tip to inject PermaFlo DC. Start injecting at the bottom of the canal. Place post and light cure 40 seconds.



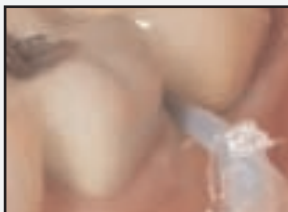
Begin core build-up. Continue with PermaFlo DC. Also use Vit-I-essence or Amelogen Plus as needed.



Perform final cure. Begin preparation for post placement using UniCore Post system.

## Clinical Pointers

### PERMAFLO DC PRIMERS FOR SUBGINGIVAL DESENSITIZATION - For root sensitivity apical to Class II fillings or crown margins:



1. Disinfect root and sulcus by rubbing with Consepis for one minute. Hydraulics of syringe delivery are beneficial for reaching interproximally! Air dry, do not rinse.



2. Using the Black Mini Brush tip, firmly rub with Primer A 10 seconds then Primer B 10 seconds. Check sensitivity by gently blowing air on the area. Repeat procedure until sensitivity is reduced or eliminated (usually less than 5-7 applications.) If sensitivity recurs, anesthetize, place retraction cord, reapply primers and seal with PermaQuick bonding resin. Air thin and inspect for puddled resin before light curing.

**NOTE: If sensitive roots are supragingival, we recommend light cure adhesive PQ1 and thin layer of bond or sealant resins.**

### Adhesive Luting for Crowns, Inlays and Onlays



With syringe/tip delivery, crown is loaded from depth of crown, thus assuring no air entrapment.

### #1319 - PermaFlo DC Bonded Post Kit - Regular Set

- 2 - 12gm TwoSpense2 A2 syringes
- 2 - 1.2ml Ultra-Etch syringes
- 2 - 1.2ml PermaFlo DC Primer A syringes
- 2 - 1.2ml PermaFlo DC Primer B syringes
- 5 - Luer Vacuum Adapters
- 20 - Ultra-Mixer Mixing tips
- 40 - Capillary Brush tips
- 40 - Endo-Eze 22ga tips
- 20 - TriAway Adaptors
- 20 - Skini syringes



### #1318 - PermaFlo DC Indirect Luting Kit - Regular Set

- 3 - 12gm TwoSpense2 syringes (A2, A3.5 and Translucent)
- 1 - 1.2ml Ultra-Etch syringe
- 1 - 1.2ml Consepsis Scrub syringe
- 2 - 1.2ml PermaFlo DC Primer A syringes
- 2 - 1.2ml PermaFlo DC Primer B syringes
- 20 - Inspiral Brush tips
- 20 - Black Mini tips
- 30 - Ultra-Mixer Mixing tips
- 40 - Black Mini Brush tips
- 1 - PropGard Regular
- 2 - Tongue Guards
- 20 - Skini syringes



- #3043 - A2
- #3044 - A3.5

- #3045 - Translucent
- #3046 - Opaque White

- 1 - 12gm syringe



### #624 - PermaFlo DC Primers A & B Kit

- 2 - 1.2ml PermaFlo DC Primer A syringes
- 2 - 1.2ml PermaFlo DC Primer B syringes



- #1292 - PermaFlo DC Primer A 1.2ml Syringes 2pk
- #1293 - PermaFlo DC Primer B 1.2ml Syringes 2pk



Shelf Life: 24 months. PermaFlo DC  
 Shelf Life: 18 months. PermaFlo DC Primers  
 Refrigerate if not used on a daily basis.

## CLINICAL REFERENCE

See page 26

### Consepsis® Scrub

CHLORHEXIDINE ANTIBACTERIAL SLURRY

- Reduces potential post-op sensitivity
- No bond strength compromise
- Non-splatter formula
- Scrub, clean, and disinfect in one operation

